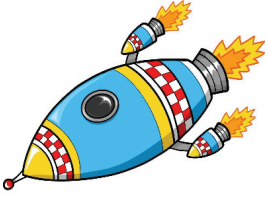




MULTIPLIKATION



$3 \times 8 =$

$10 \times 9 =$

$5 \times 5 =$

$9 \times 7 =$

$8 \times 3 =$

$4 \times 10 =$

$8 \times 8 =$

$4 \times 3 =$

$5 \times 8 =$

$3 \times 3 =$

$9 \times 6 =$

$2 \times 8 =$

$10 \times 5 =$

$8 \times 8 =$

$6 \times 3 =$

$9 \times 7 =$

$4 \times 6 =$

$8 \times 4 =$

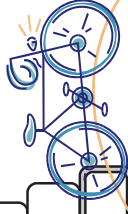
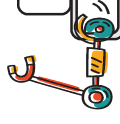
$10 \times 6 =$

$6 \times 9 =$

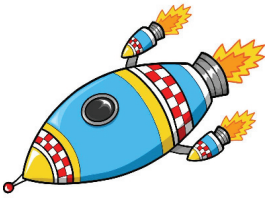
$4 \times 4 =$

$3 \times 8 =$

$5 \times 2 =$



MULTIPLIKATION



$6 \times 2 =$

$9 \times 9 =$

$5 \times 10 =$

$4 \times 8 =$

$5 \times 5 =$

$10 \times 8 =$

$9 \times 9 =$

$4 \times 5 =$

$9 \times 2 =$

$3 \times 6 =$

$3 \times 7 =$

$3 \times 4 =$

$10 \times 10 =$

$5 \times 9 =$

$6 \times 2 =$

$8 \times 8 =$

$5 \times 4 =$

$6 \times 7 =$

$5 \times 8 =$

$6 \times 6 =$

$7 \times 8 =$

$9 \times 7 =$

$9 \times 10 =$

