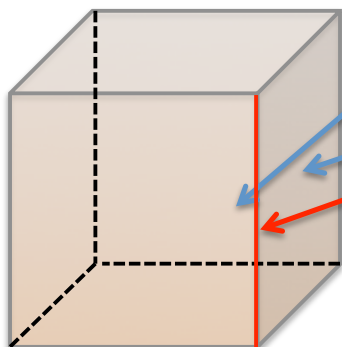


# Géométrie cm

## Les solides droits

Leçon 10

♥ ..... est une .....

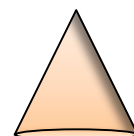
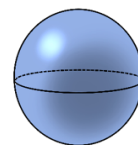
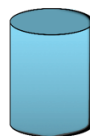


.....  
 .....  
 .....  
 Ce cube a ..... faces.  
 ..... sommets.  
 ..... arêtes.

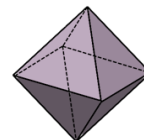
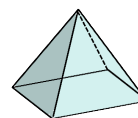
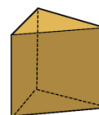
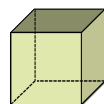


Il existe deux types de solides :

● Ceux qui ont des faces qui ne sont pas planes (le cylindre, le cône, la sphère)

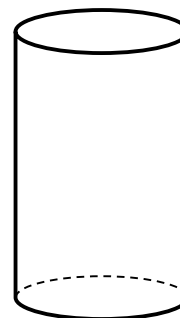
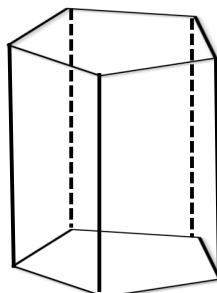
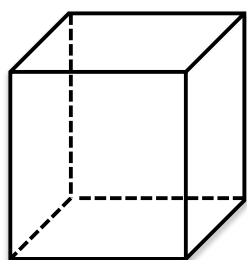


● Ceux qui ont des faces sont des ..... : les .....



♥ On appelle ..... un solide qui a ..... et .....

● Quelques solides droits :

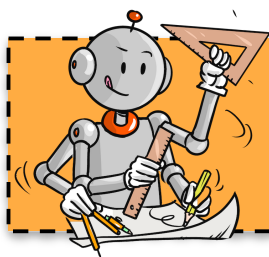


.....

.....

.....

.....

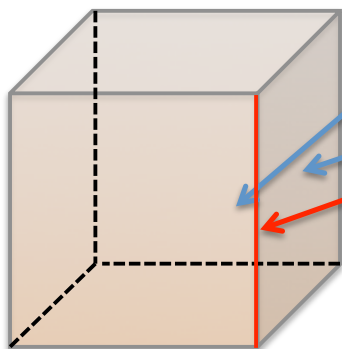
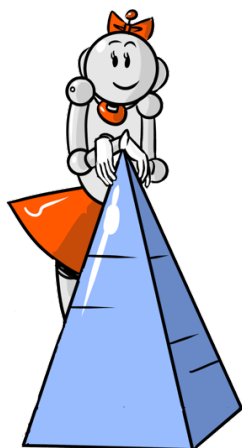


# Géométrie cm

## Les solides droits

Leçon 10

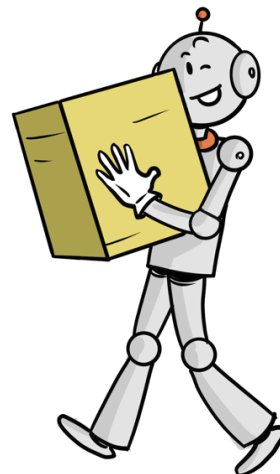
♥ Un solide est une figure géométrique en 3 dimensions.



un sommet

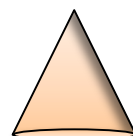
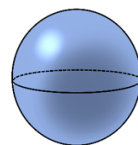
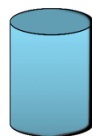
une face  
une arête

Ce cube a ..... faces.  
..... sommets.  
..... arêtes.



Il existe deux types de solides :

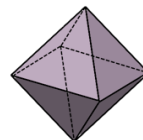
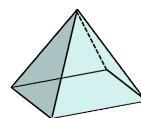
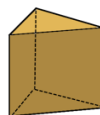
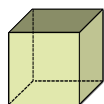
● Ceux qui ont des faces qui ne sont pas planes (le cylindre, le cône, la sphère)



un cylindre une sphère

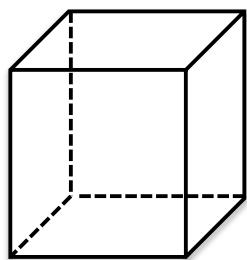
un cône

● Ceux qui ont des faces sont des polygones : les polyèdres.



♥ On appelle solide droit un solide qui a deux faces parallèles et superposables.

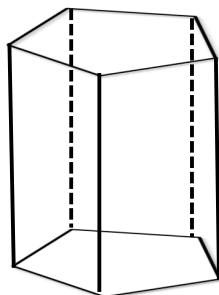
● Quelques solides droits :



le cube



le pavé droit



le prisme droit



le cylindre